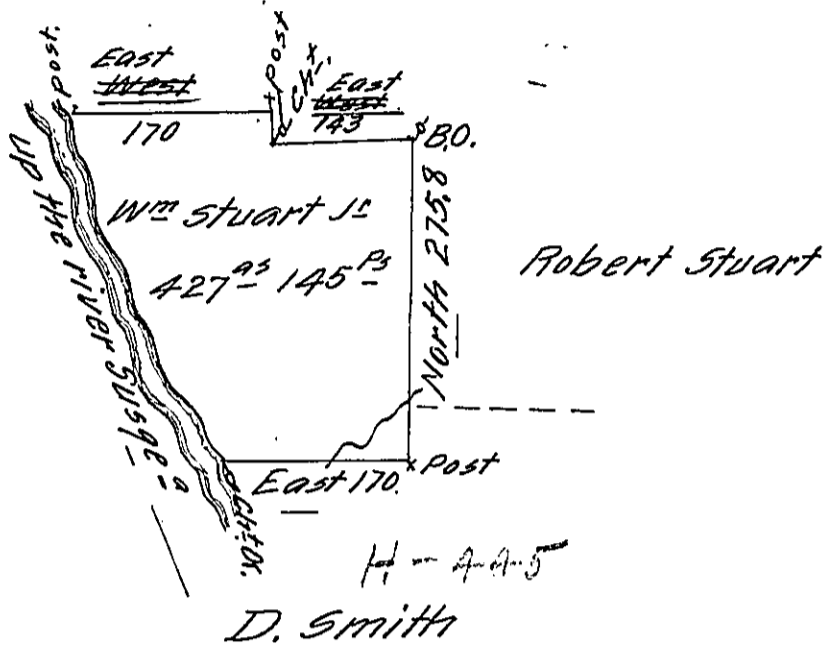


Pat.  
~~H-52-118~~  
 H-53-448.

Deborah Stuart

the Courses and Distances  
 Down the River from Ch<sup>o</sup>x.  
 to post are as follow,

- N. 20. W. 8. P<sup>s</sup>
- N. 3 $\frac{1}{2}$  W. 152.
- N. 22. W. 64.
- N. 27. W 49.
- N. 19. W 66. to post.



Situate on the South East Side of the West Branch  
 of Susquehanna about half a Mile below the  
 Mouth of big Moshannon Creek in Mifflin County  
 containing 427<sup>ac</sup> 145<sup>P<sup>s</sup></sup> and the usual allowance  
 for Roads —  
 Surveyed the 11<sup>th</sup> day of November 1792 in per-  
 suance of a Warrant Dated the 31<sup>st</sup> Day of July  
 1792.

Jo. J. Wallis D.S.

Daniel Brodhead Esq<sup>r</sup> S.G.

IN TESTIMONY that the above is a copy of the original remaining on file in  
 the Department of Internal Affairs of Pennsylvania, made  
 conformably to an Act of Assembly approved the 16th day of  
 February, 1833, I have hereunto set my Hand and caused  
 the Seal of said Department to be affixed at Harrisburg,  
 this eighteenth day of January 1912.

*Henry Howell*  
 Secretary of Internal Affairs.